



**Cab freight Services Volvo Tractor unit**

**Volvo FH 540. Fitted with a Fassi F820RA.2.26/L414 (fly jib and winch)**

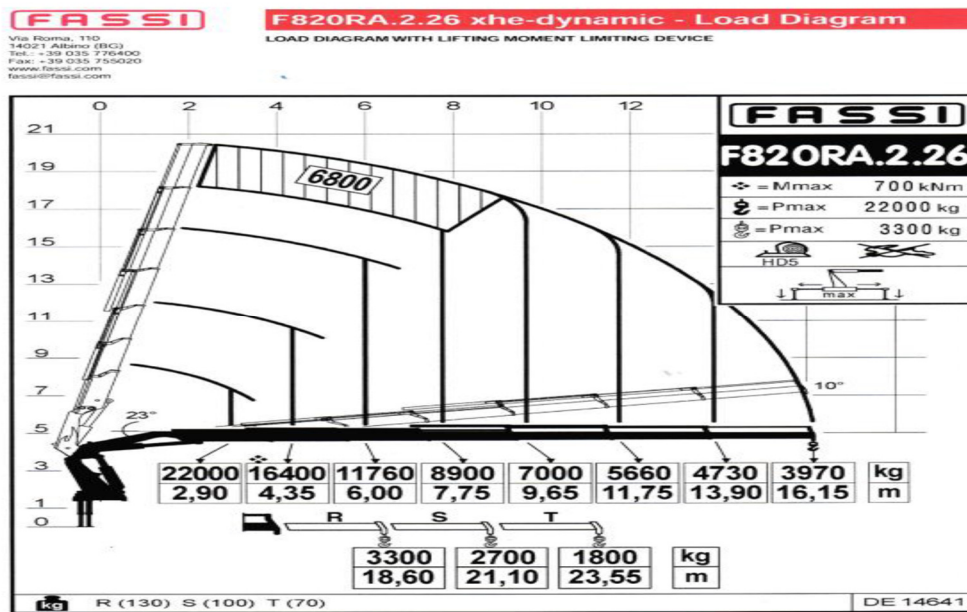


**Currently pulling a 45ft trailer,**



## Crane Capabilities ( standard 6 extensions )

22000kgs @ 2.9m  
 16400 kgs @ 4.35m  
 11760kgs @ 6.00m  
 8900 kgs @ 7.75m  
 7000 kgs @ 9.65m  
 5660kgs @ 11.75m  
 4730 kgs @ 13.90m  
 3970 kgs @ 16.15m





Crane Capabilities with fly jib (standard 6 extensions with 4 extension fly jib)

3100kgs @ 15.70m  
2375kgs @ 19.20m  
2150kgs @ 20.65m  
1955kgs @ 22.30m  
1790kgs @ 24.00m  
1420kgs @ 25.80m





**FASSI**

Via Roma, 110  
14021 Albino (BG)  
Tel.: +39 035 776400  
Fax: +39 035 755020  
www.fassi.com  
fassi@fassi.com

**F820RA.2.26/L414 xhe-dynamic - Load Diagram**

LOAD DIAGRAM HYDRAULIC EXTENSIONS WITH LIFTING MOMENT LIMITING DEVICE

